

## Accessory Installation Guide Jog Pendant Handwheel

Accessory Name	Jog Pendant Handwheel
Accessory P/N	011111
Applicable to	BenchMill 6000 ProMill 8000 BenchTurn 7000 ProTurn 9000

### 1 Additional Requirements

No additional tools or parts are required.

### 2 Unpacking Instructions

1. Remove the handwheel from the box.
2. Remove the packaging material.



### 3 Plug in the Handwheel

1. Refer to your machine's Quick-start Install Guide for the specific location of the connection port.
2. Remove the black plastic cap from the handwheel port on the machine.
3. Plug the handwheel cable into the matching port. Note that it will fit in only one orientation.

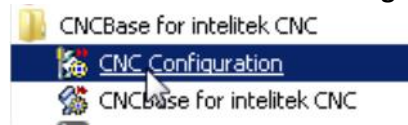


4. Tighten the plug collar by hand.

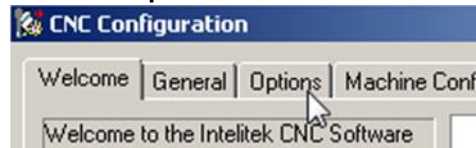


### 4 Configure the Software

1. Click **Start** → **All Programs** → **CNCBase for Intelitek CNC** → **CNC Configuration**.



2. Click the **Options** tab.



3. Click **Reinstall**.



4. Select **Jogging Handwheel**.



5. Click **Reinstall**.



6. Click **OK** to close CNCBase.



Installation complete.