

# **BENCHMAN<sup>®</sup>**

# **Machining Center**

**Addendum:**  
**Control Program Version 2.0**



**LIGHT MACHINES**

A **DAVENPORT** INDUSTRIES DIVISION

444 East Industrial Park Drive  
Manchester, New Hampshire 03109-5317  
(603)625-8600 (800)221-2763 Fax (603)625-2137  
[www.benchman.com](http://www.benchman.com) e-mail:[info@lightmachines.com](mailto:info@lightmachines.com)

Copyright ©1999-2000 Light Machines Corporation  
34-7713-0003

# Table of Contents

BENCHMAN® Control Program Version 2.0 Upgrade .....	1
<b>1. Installation .....</b>	<b>1</b>
<b>2. Menu Commands .....</b>	<b>2</b>
2.A.View Menu .....	2
2.B. Tools Menu .....	2
2.B.1. Tool Library .....	3
2.B.2 Operate ATC .....	3
2.B.3. ATC Com Port .....	4
2.B.4. Tool Length Offset Probe .....	4
2.B.5. ATC Terminal Mode .....	5
2.C. Setup Menu .....	5
2.C.1. Set/Check Home .....	6
2.C.2. Verify Current Tool .....	6
2.C.3. Tool Locking .....	7
2.C.4. Configure System .....	8
2.C.5. Option Indicators .....	11
2.D. Window Menu .....	11
<b>3. Icons .....</b>	<b>13</b>
3.A. Standard Tool Bar .....	13
3.A.1. Set Home .....	13
3.A.2. Edit Window Options .....	13
3.A.3. Automatic Tool Changer (ATC) .....	14
<b>4. Tool Length Offset Probe .....</b>	<b>14</b>
4.A. Activating/Deactivating Tool Length Probe Option .....	16

# BENCHMAN®-XT Control Program Version 2.0 Upgrade

The Version 2.0 Upgrade of the BENCHMAN®-XT Control Program offers several new features, and is Year 2000 compliant.

## 1. Installation

---

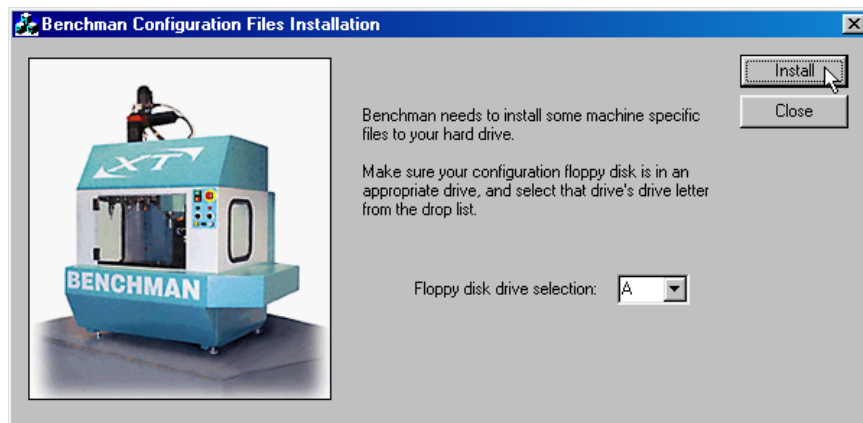
Put the BENCHMAN®-XT Control Program Version 2.0 CD into the CD-ROM drive of the computer.

From the Windows® NT desktop, click on **Start > Run**.

Type in [drive letter]:\setup.exe.

Follow the instructions on the screen.

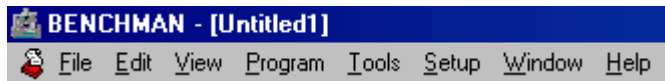
A 3.5" floppy disk with machine-specific parameters will be supplied with the Control Program CD. When prompted during installation, insert the disk, and click on the Install box.



Once installed, you can start the BENCHMAN® Control Program by clicking on **Start > Programs > BENCHMAN XT > BENCHMAN XT** in the Windows® NT desktop.

## 2. Menu Commands

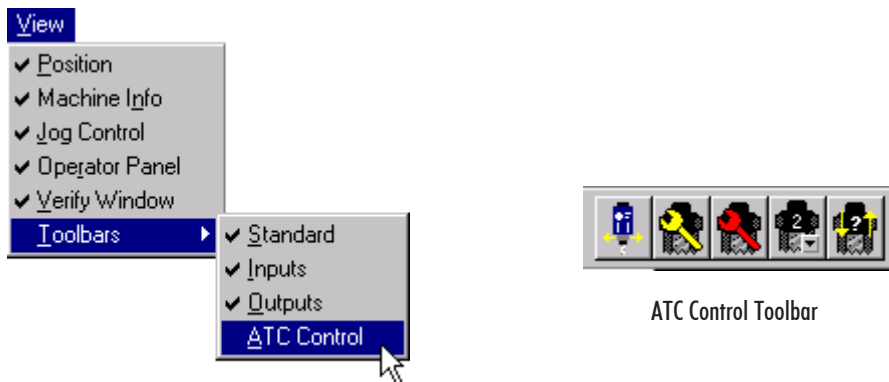
---



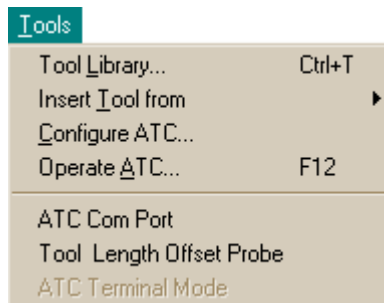
The Main Menu Commands in the Control Program (located in the top left corner) are unchanged; but there have been several additions and revisions to their pull-down menu options.

### 2.A.View Menu

The ATC Control toolbar option has been added to this menu. When there is a check mark next to ATC Control, the ATC toolbar is visible in the control program.



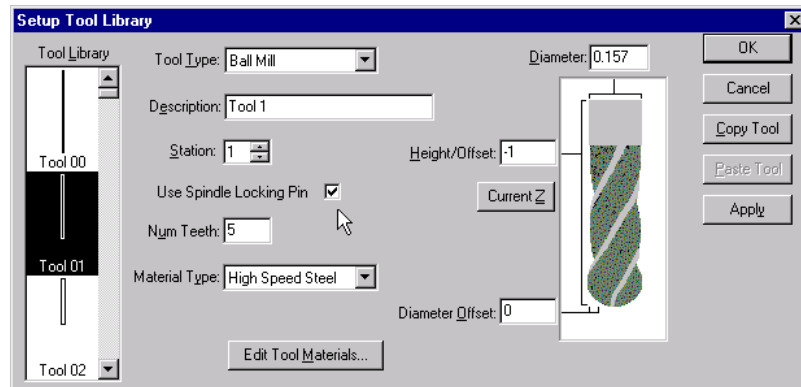
### 2.B. Tools Menu



The Tool Library and Operate ATC dialog boxes have been modified. The Tool Wizard option has been removed from the Tools menu. Three ATC command options have been added: ATC Com Port, Tool Length Offset Probe, and ATC Terminal Mode.

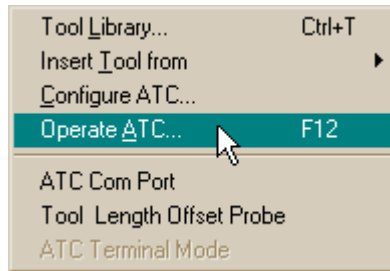
### 2.B.1. Tool Library

Click on the Tool Library menu option to open the Setup Tool Library dialog box.

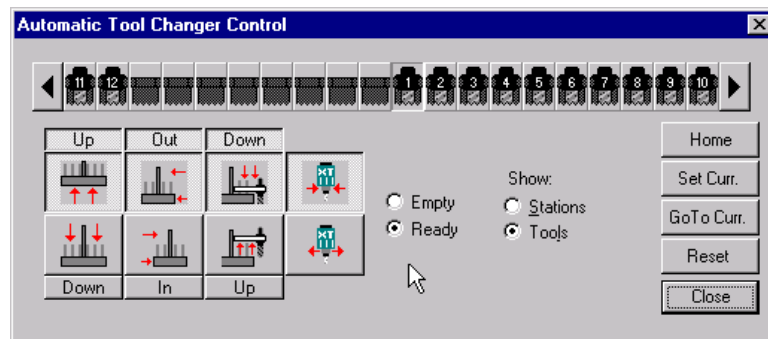


The only change is the **Use Spindle Locking Pin** option. When checked, the tool will be locked into the spindle. This option should only be used when machining deep cuts into hard materials.

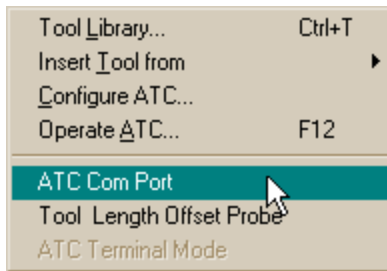
### 2.B.2 Operate ATC



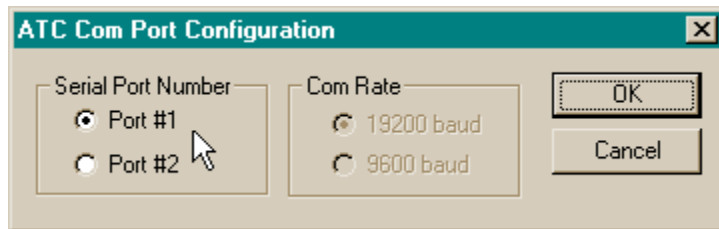
Click on the **Operate ATC** menu option to open the **Automatic Tool Changer Control** dialog box. The buttons to manually control the ATC have been rearranged for ease of use.



### 2.B.3. ATC Com Port

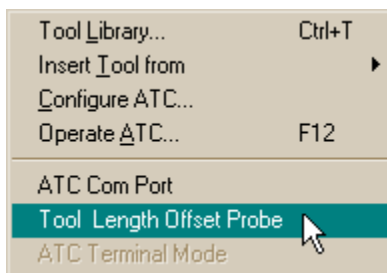


Click on the **ATC Com Port** menu option to open the **ATC Com Port Configuration** dialog box.



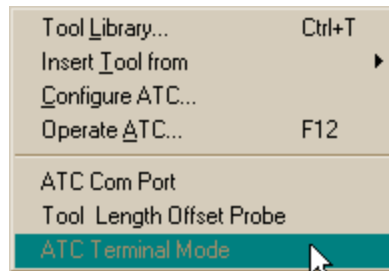
The ATC previously plugged into the COM1 port only on your computer. Now you can use this dialog box to set the serial port to COM1 or COM2. This allows you to use the COM1 port for another device.

### 2.B.4. Tool Length Offset Probe



The **Tool Length Offset Probe** option is only available if you have the **ACC-5269 Tool Length Offset Probe** option on your BENCHMAN<sup>®</sup>-XT. See Section 4.A. for more information for using the **Tool Length Offset Probe** features in the control program.

### 2.B.5. ATC Terminal Mode



The ATC Terminal Mode is an inactive menu option, and is only used by authorized service personnel for diagnostic testing.

## 2.C. Setup Menu

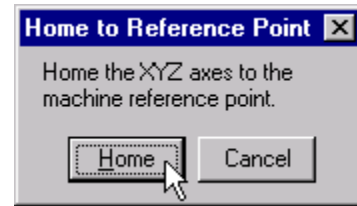
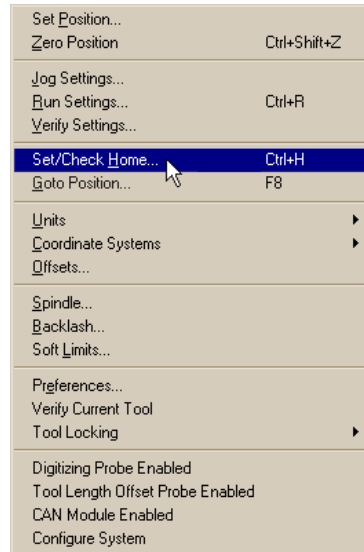


The Set/Check Home dialog box has been simplified. The Verify Current Tool, Tool Locking, and Configure System commands have all been added.

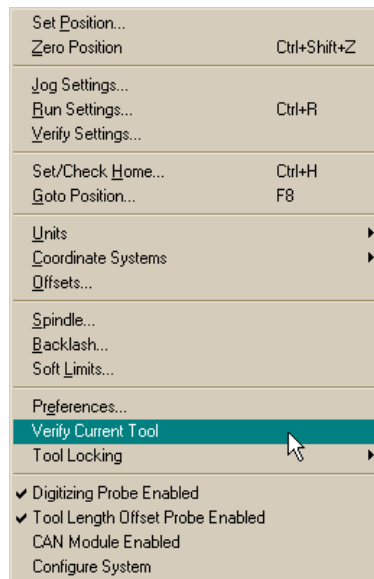
The Digitizing Probe Enabled, Tool Length Offset Probe Enabled, and CAN Module Enabled indicators have also been added; and can only be used if you have any of those options installed on your machine.

### 2.C.1. Set/Check Home

Click on **Setup > Set/Check Home** to open the **Home to Reference Point** dialog box. Click on **Home** to send the BENCHMAN®-XT to its machine home reference point.

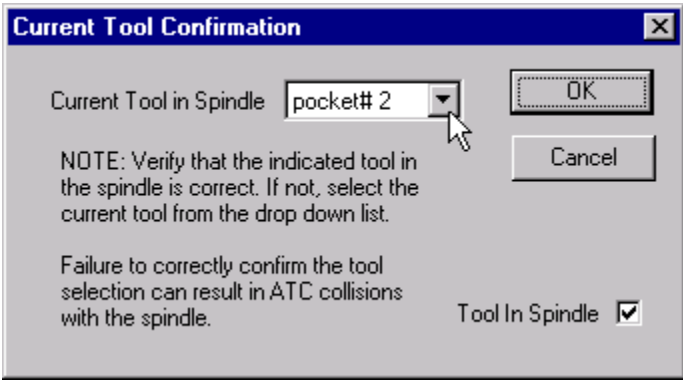


### 2.C.2. Verify Current Tool

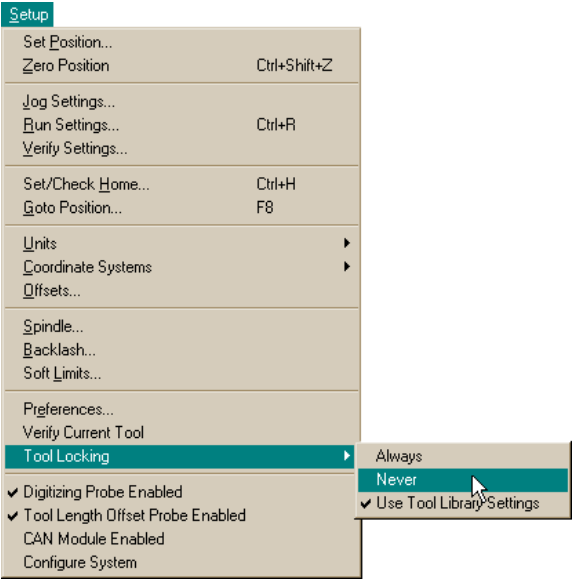




Click on the **Verify Current Tool** option in the Setup menu to open the **Current Tool Confirmation** dialog box. This will allow you to confirm that the correct tool is in the spindle, or allow you to change the setting to the tool that is in the spindle.



### 2.C.3. Tool Locking



The **Tool Locking** menu allows you to override the **Use Spindle Locking Pin** option in the **Setup Tool Library** (refer to Section 2.B.1). Click **Always** to set the spindle to lock on every tool, or click **Never** to not lock any tool, regardless of **Setup Tool Library** setting. Click **Use Tool Library Settings** to use the **Setup Tool Library** setting for each tool.

## 2.C.4. Configure System

### Warning!

**ALL THE SYSTEM SETTINGS FOR EACH BENCHMAN®-XT ARE PRE-SET AT THE FACTORY! YOU SHOULD NOT USE THE CONFIGURE SYSTEM COMMAND WITHOUT CONSULTING THE SERVICE DEPARTMENT AT LIGHT MACHINES FIRST!**

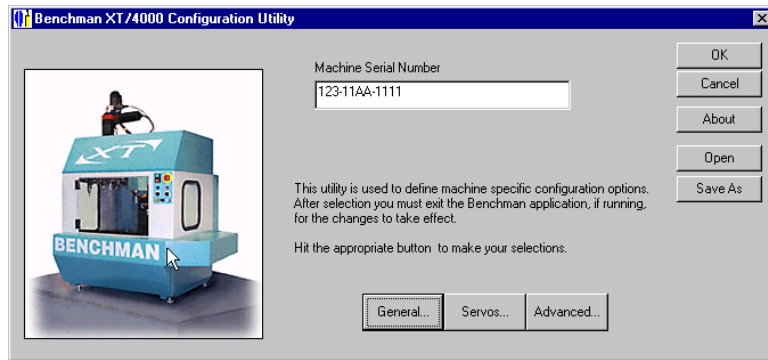


The **Configure System** utility is used to review parameters for the machining center, and will allow you to make changes or enable options. It should only be used if you are using system options that need to be turned on/off like the **Digitizing Probe**, **CAN Module**, or **Tool Length Offset Probe**. If you are experiencing problems with your machine, consult Light Machines' Service Department first.

When you click the **Configure System** option, you are prompted with the following message:



Changes made to the system configuration will not take effect unless the control program is closed, then re-opened. Click **Yes** to close the BENCHMAN® control program, and open the **Configuration Utility** dialog box; or click **No** to return to the control program.



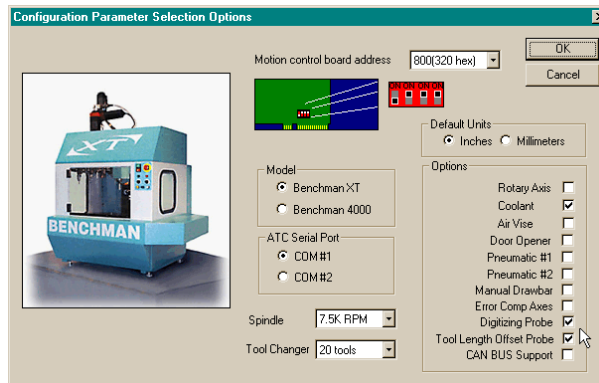
---

## NOTE!

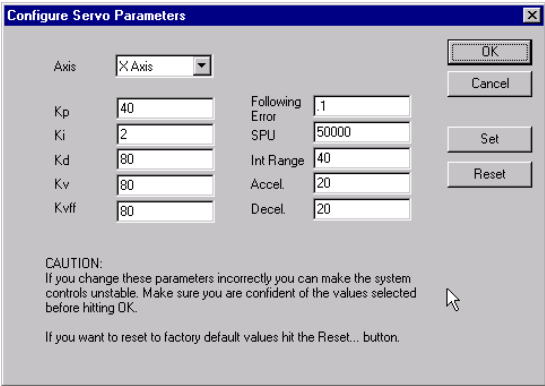
**CHANGING SYSTEM SETTINGS WITHOUT CONSULTING LIGHT MACHINES CORP. COULD CAUSE THE MACHINE TO MALFUNCTION!**

---

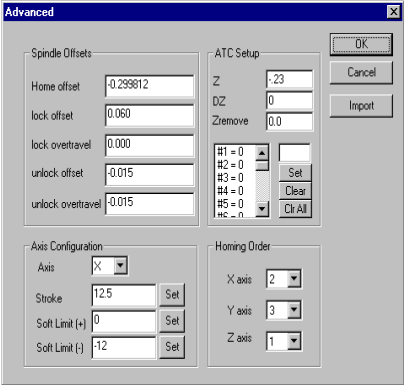
Click on the **General** button to open the **Configuration Parameters Selection** dialog box. This screen will allow you to make general changes to the machining center.



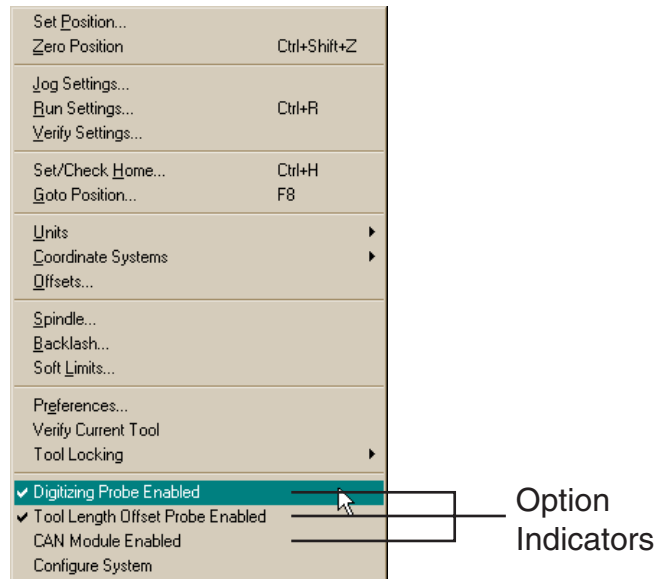
Click on the **Servo** button to open the **Configure Servo Parameters** dialog box. This screen allows you to change the parameters for the X, Y, and Z axis servo motors.



Click on the **Advanced** button to open the **Advanced Settings** dialog box. This screen will allow you to make changes to the spindle and axes settings.



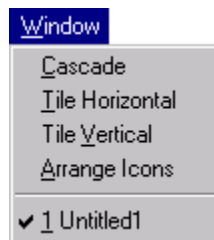
### 2.C.5. Option Indicators



The **Option Indicators** can be used to turn factory-installed options on or off. If there is a check mark next to an option, it has been activated in the **XT Configurator**. If there is no check mark, it is not activated.

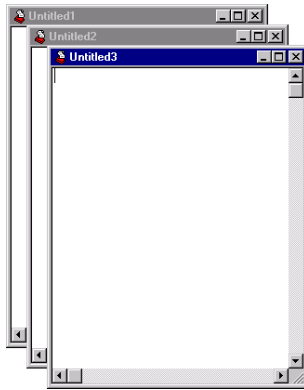
Click on an option to open the **BENCHMAN®-XT Configuration Utility**. See Section 4.A. for more information on activating/deactivating options.

### 2.D. Window Menu

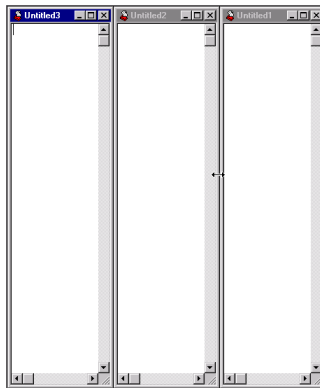


The **Window** menu has three options for modifying the display of NC programs in the **Edit Window**: **Cascade**, **Tile Horizontal**, and **Tile Vertical**.

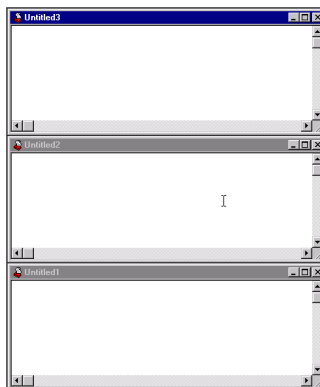
Click on **Cascade** to tile your programs on top of each other as shown.



Click on **Tile Vertical** to stretch your programs in the vertical direction, and place them side by side.



Click on **Tile Horizontal** to stretch your programs in the horizontal direction, and place them on top of each other.

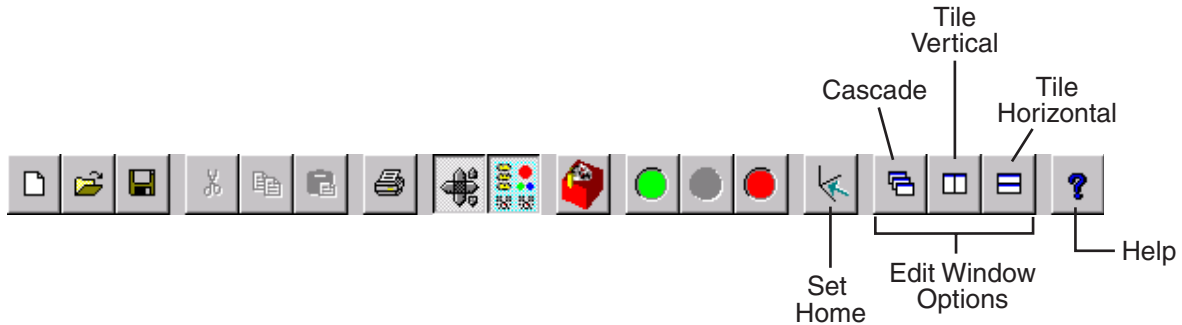


## 3. Icons

---

### 3.A. Standard Tool Bar

The **Standard Tool Bar** contains new icons. The **Help** icon has been moved to the end of the Standard Tool Bar.



#### 3.A.1. Set Home



Click on the **Set Home** icon to open the **Home to Reference Point** dialog box. Refer to Section 2.C.1.

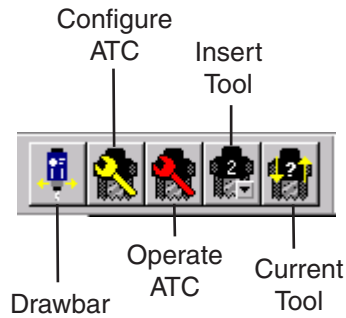
#### 3.A.2. Edit Window Options



Click on these icons to modify the display of multiple NC programs in the edit window. Refer to Section 2.D. for more information.

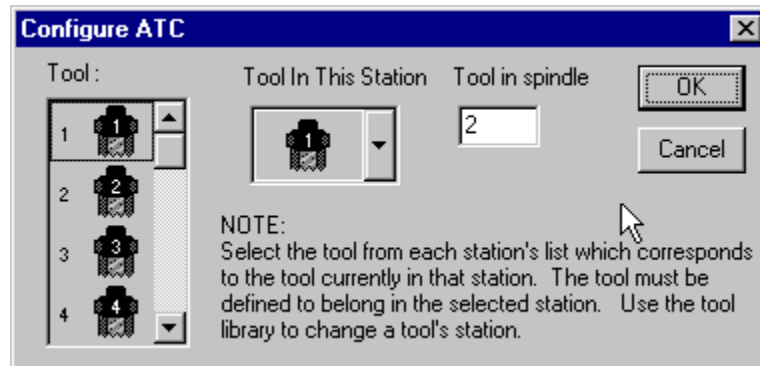
### 3.A.3. Automatic Tool Changer (ATC)

The Automatic Tool Changer toolbar has been added to the BENCHMAN®-XT control program to give quick access to ATC commands. To enable/disable the ATC tool bar, see Section 2.A.



The **Drawbar** icon allows you to clamp or unclamp a tool in the spindle. **CAUTION! WHEN DEPRESSED, THE DRAWBAR ICON WILL UNCLAMP THE TOOL IN THE SPINDLE. ANY TOOL THAT IS IN IT COULD FALL OUT!**

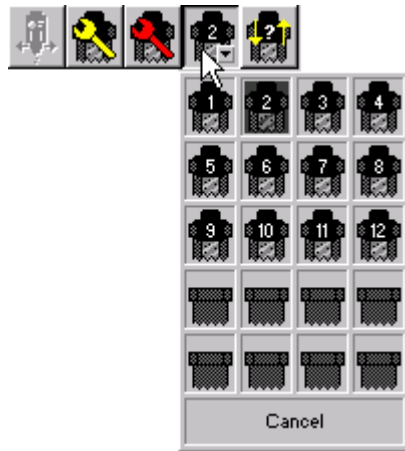
The **Configure ATC** icon opens the Configure ATC dialog box. This allows you to set the tools in specific stations on the ATC.



The **Operate ATC** icon opens the **Automatic Tool Changer Control** dialog box. See Section 2.B.2. for more information.



The **Insert Tool** icon produces a drop-down menu of defined tool stations. Click on a tool number to insert the tool from that station in the spindle.



The **Current Tool** icon opens the **Current Tool Confirmation** dialog box. See Section 2.C.3. for more information.

## 4. Tool Length Offset Probe

---

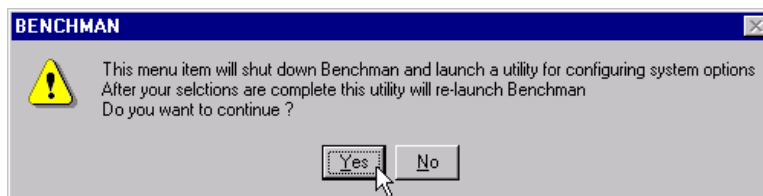
Some features have been added for the Tool Length Offset Probe option. This option can be used to measure tool height offsets, and store them in the control program.

### 4.A. Activating/Deactivating Tool Length Probe Option

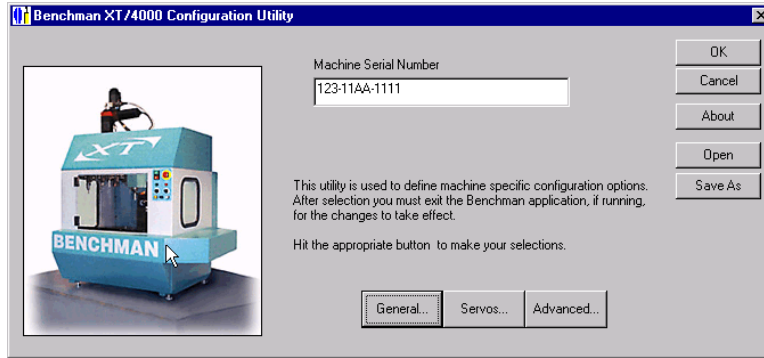
To activate/deactivate the probe option, click on **Setup**, then **Configure System**, or click on the **Tool Length Offset Probe Enabled** option in the **Setup Menu**.



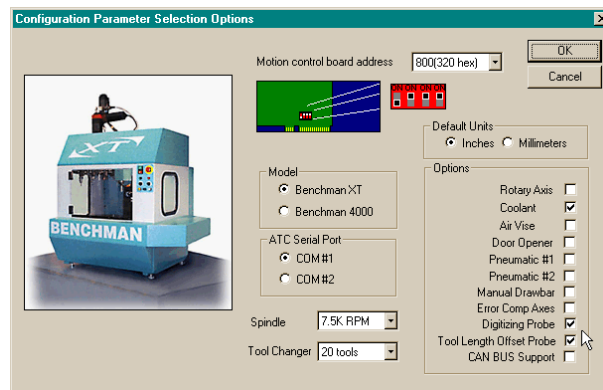
The program will prompt you with the message that it will shut down the control program, and open the **Configure** utility.



Click **Yes** to open the **Configuration Utility** dialog box. Remember, changes made to the system configuration will not take place unless the system is closed, and then re-opened.



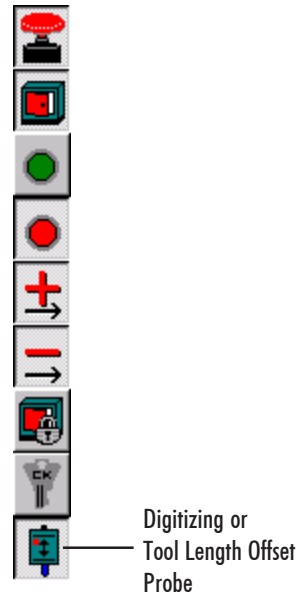
Click on **General** to open the **Configuration Parameter Selection Options** dialog box.



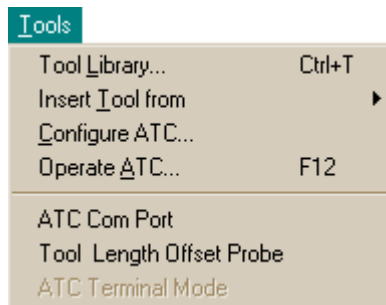
The **Digitizing Probe** and **Tool Length Offset Probe** features are listed under **Options**. Click once in the box next to each feature. A check mark in the box means the option is activated; a blank box means the option is deactivated.

When you activate an option, a check mark will appear next to it in the Setup menu in the control program (see Section 2.C.5).

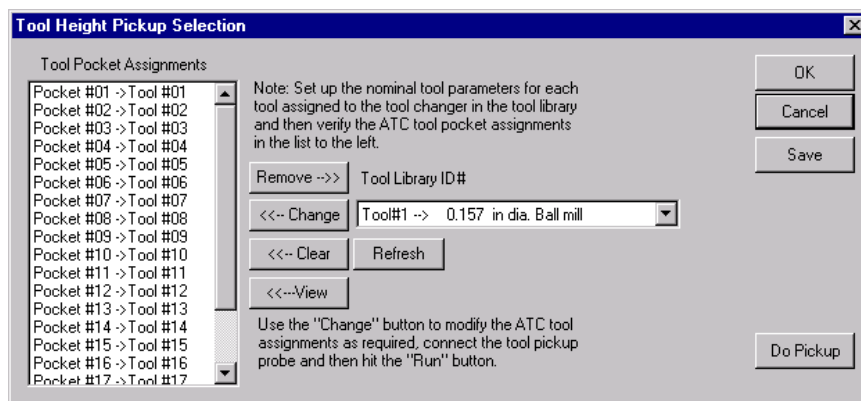
When the **Digitizing Probe** and/or **Tool Length Offset Probe** option is activated, a probe icon is added to the Outputs toolbar.



When the **Tool Length Offset Probe** option is activated, the **Tool Length Offset Probe** menu item under **Tools** becomes active.



Click on **Tool Length Offset Probe** to open the **Tool Height Pickup Selection** dialog box.



Click on **Do Pickup** to open the **Tool Length Offset Pickup** dialog box.

**Tool Length Offset Pickup**

Current Tool  
Tool#1 --> 0.157 in dia. Ball mill

To calibrate the pickup points for each tool use the Jog Control to place the each tool tool over the pick up probe and hit the "Set Coords" button.

Engage Pickup  
 Engage Probe  
 Probe Hit

Probe velocity (in/min) 10.000  
Probe min. Z position 0.000

Jog Control  
Jog Increment (in, deg) 0.010  
Jog Velocity (in/min, deg/min) 50  
X 0.000  
Y 0.000  
Z 0.000  
Cont. Incr.

OK  
Cancel  
Set Coords  
View Tool  
GoTo Coords  
Go Home  
Next Tool  
Do Pickup  
Stop