

LearnMate 5



Course Installation Procedure

Catalog # 200056 Rev. A

June 2012

Copyright © 2012 intelitek Inc.

LearnMate 5 Course Installation Procedure

June 2012

Every effort has been made to make this guide complete and as accurate as possible. However, no warranty of suitability, purpose or fitness is made or implied. Intelitek Inc. is not liable or responsible to any person or entity for loss or damage in connection with or stemming from the use of the software, equipment and/or the information contained in this publication.

Intelitek Inc. bears no responsibility for errors which may appear in this publication and retains the right to make changes to the software, equipment and manual without prior notice.

intelitek Inc.

444 East Industrial Park Drive

Manchester, NH 03109-5317

USA

Tel: (603) 625-8600

Fax: (603) 625-2137

website: <http://www.intelitek.com>

email: info@intelitek.com

1. Course Installation Procedure

After having installed the LearnMate 5 Server, purchased LearnMate Courses can then be installed. All LearnMate courses purchased are supplied on a CD-ROM. The CD-ROM includes not only the data required for those courses, but the LearnMate Course Importer as well. You will run the LearnMate Course Importer to install the purchased modules on the LearnMate 5 Server.

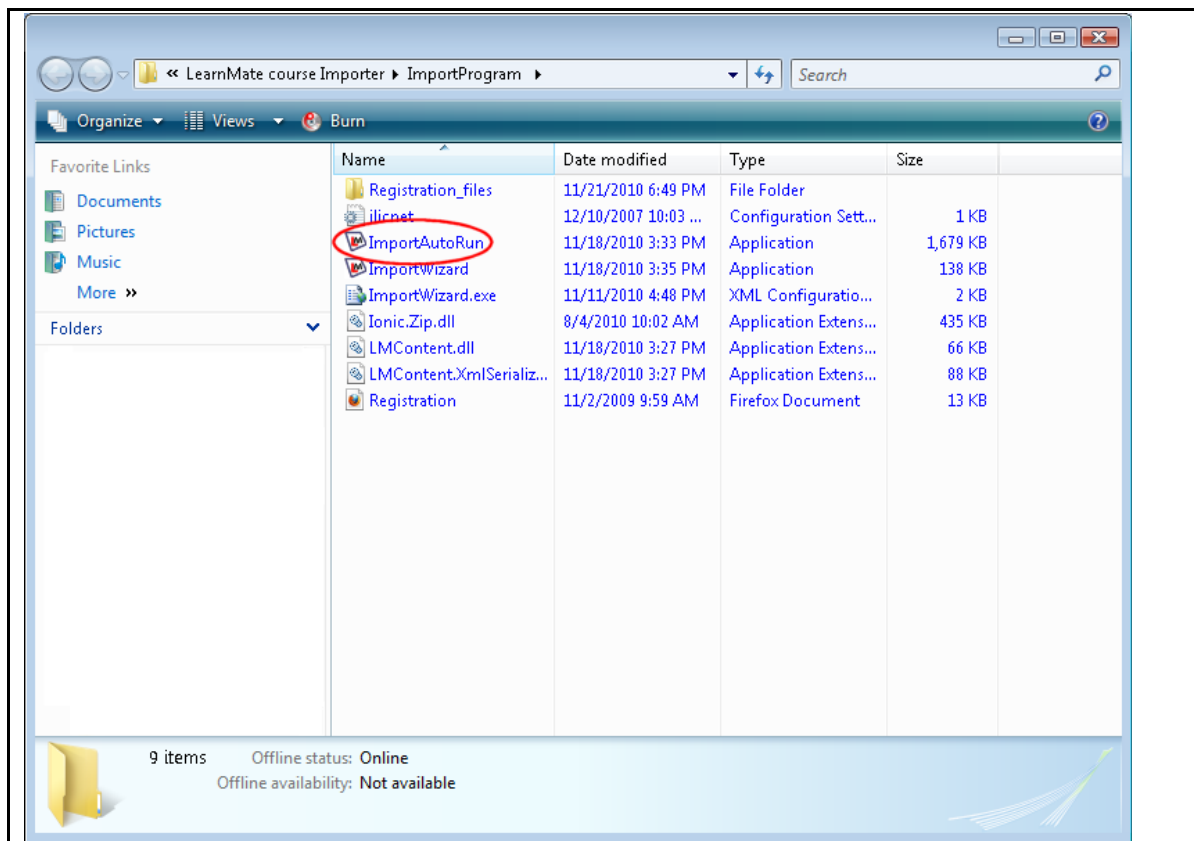
- ❖ **Note:** LearnMate modules can only be installed once the LMS installation has been successfully completed.

To begin the installation process:

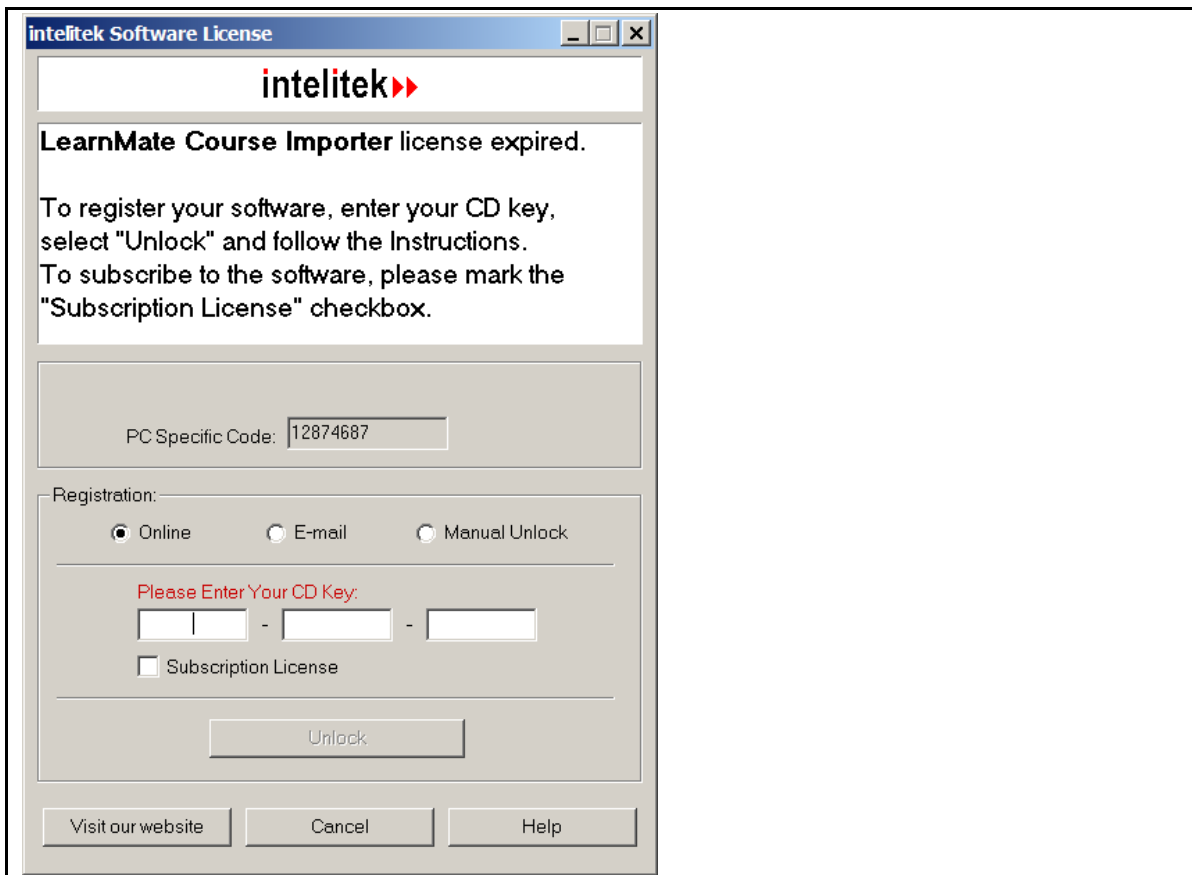
1. Insert the LearnMate Course CD into the CD-ROM drive. The installation process should start automatically.

If the installation does not start automatically:

- Open **Windows Explorer** and browse to the CD-ROM drive.
- Double click `ImportAutoRun.exe`.



The software is protected by a licensing agreement. The *intelitek Software License* page is displayed.



2. Register the license by entering the CD key.

If you have the CD key for the Course Importer, type it into the space provided. If you have the 8 digit manual unlock code, select the *Manual Unlock* radio button and enter that in the space provided. If you do not have an unlock code, see the section **Error! Reference source not found.. Error! Reference source not found.**, on page **Error! Bookmark not defined.**

Providing that the correct CD Key is entered and the license has not already been used, the **LICENSED** message will be displayed.



❖ **Note:** *The Intelitek Software License only appears the first time you run this software.*

3. Click **OK**.

The **LearnMate Course Importer** is displayed.

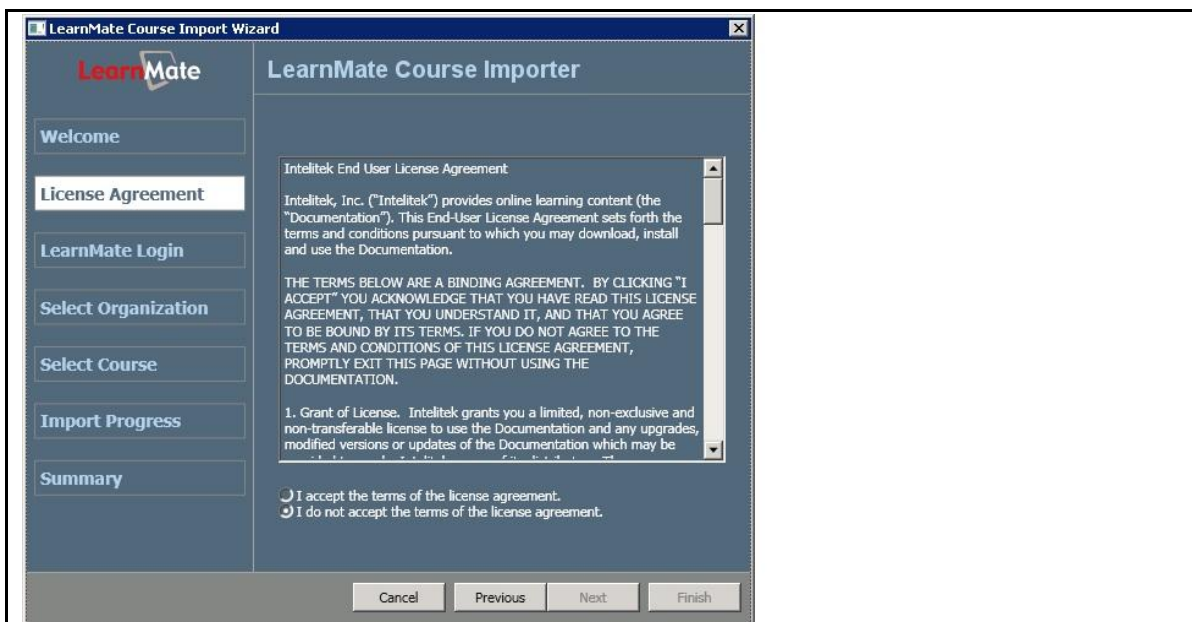


The **Welcome** page displays all steps of the import process.

At any point you may click **Cancel** to abort the system, or **Next** to continue with the import.

4. Click **Next**.

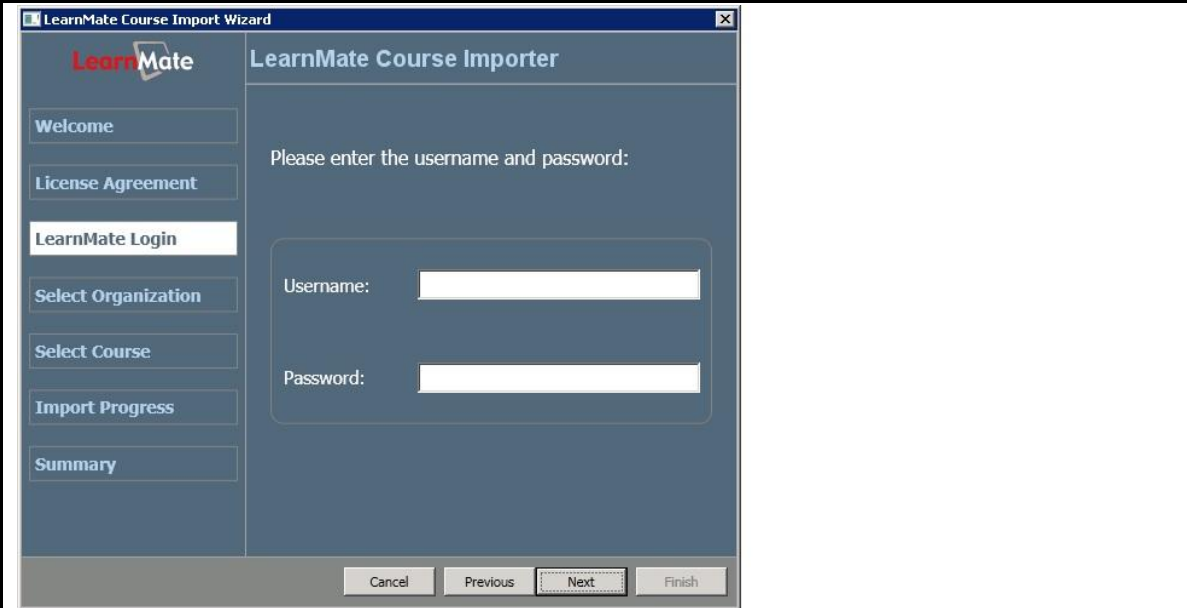
The **License Agreement** page is displayed.



Read the license agreement carefully. Then select the radio button next to *I accept the terms of the license agreement*.

5. Click **Next**.

The **LearnMate Login** page is displayed.



The screenshot shows a window titled "LearnMate Course Import Wizard" with a sub-header "LearnMate Course Importer". On the left is a navigation menu with buttons for "Welcome", "License Agreement", "LearnMate Login" (which is highlighted), "Select Organization", "Select Course", "Import Progress", and "Summary". The main area contains the text "Please enter the username and password:" followed by two input fields labeled "Username:" and "Password:". At the bottom, there are four buttons: "Cancel", "Previous", "Next" (which is highlighted), and "Finish".

6. Enter the username and password in the appropriate fields.


If the username and/or password were already changed, the new username and/or password will be needed here to access the course importer.

If the username and password were not modified previously, enter the following information in the appropriate fields:

- Username: lmadmin
- Password: LmAdm1n

7. Click **Next**.

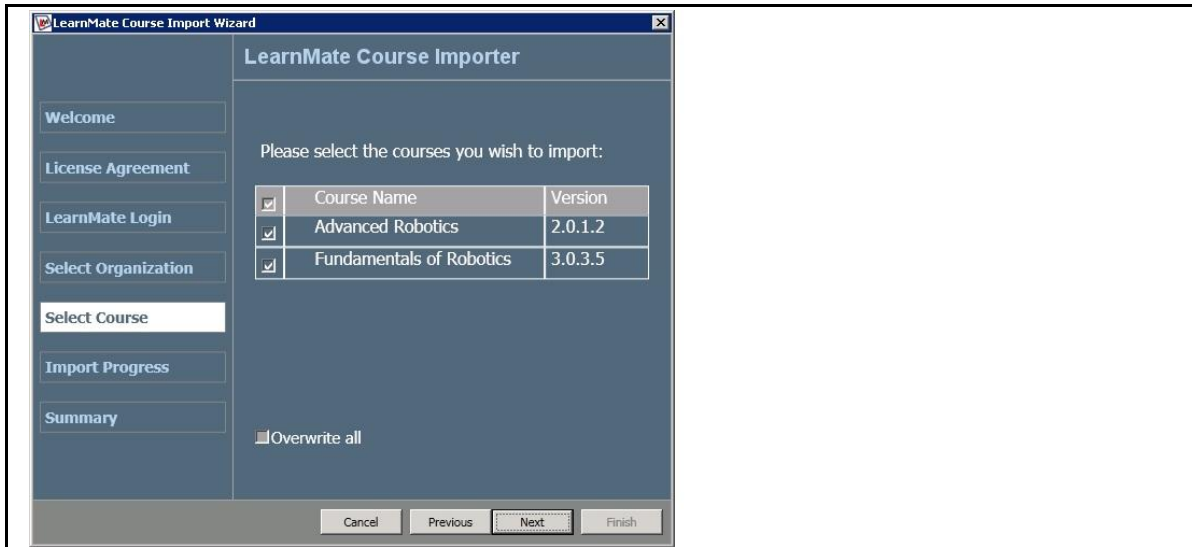
The **Select Organization** page is displayed. This page displays a list of all organizations available in your LearnMate system.



The screenshot shows a window titled "LearnMate Course Import Wizard" with a sub-header "LearnMate Course Importer". On the left is a navigation menu with buttons for "Welcome", "License Agreement", "LearnMate Login", "Select Organization" (which is highlighted), "Select Course", "Import Progress", and "Summary". The main area contains the text "Please select the organization you wish to import the course to:" followed by a dropdown menu showing "Miscellaneous". At the bottom, there are four buttons: "Cancel", "Previous", "Next" (which is highlighted), and "Finish".

8. Mark the radio button next to the organization you choose.
9. Click **Next**.

The **Select Course** page is displayed. This page displays a list of all courses available to import. It also displays the version of the courses available. By default, all checkboxes are marked.

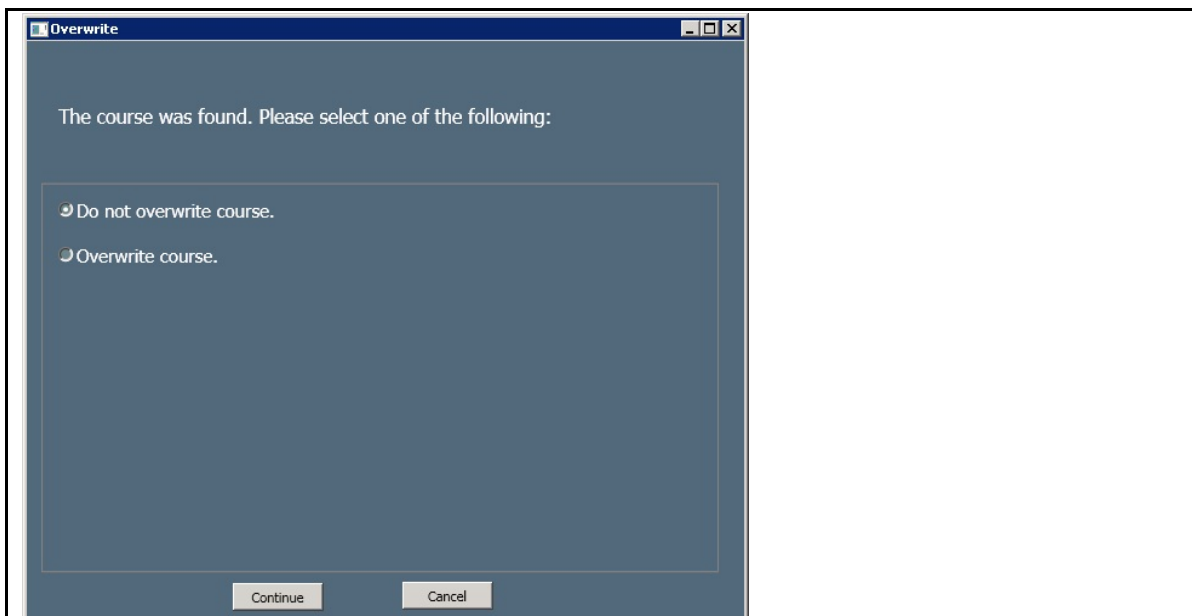


10. Ensure that only the checkboxes next to the course or courses you want to import are marked.

To specify that you want to overwrite all the courses that already exist, mark the checkbox next to *Overwrite all* at the bottom of the screen.

In the event that a course you have selected already exists within the selected organization, the importer will give the option to overwrite it.

The **Overwrite** window is displayed.



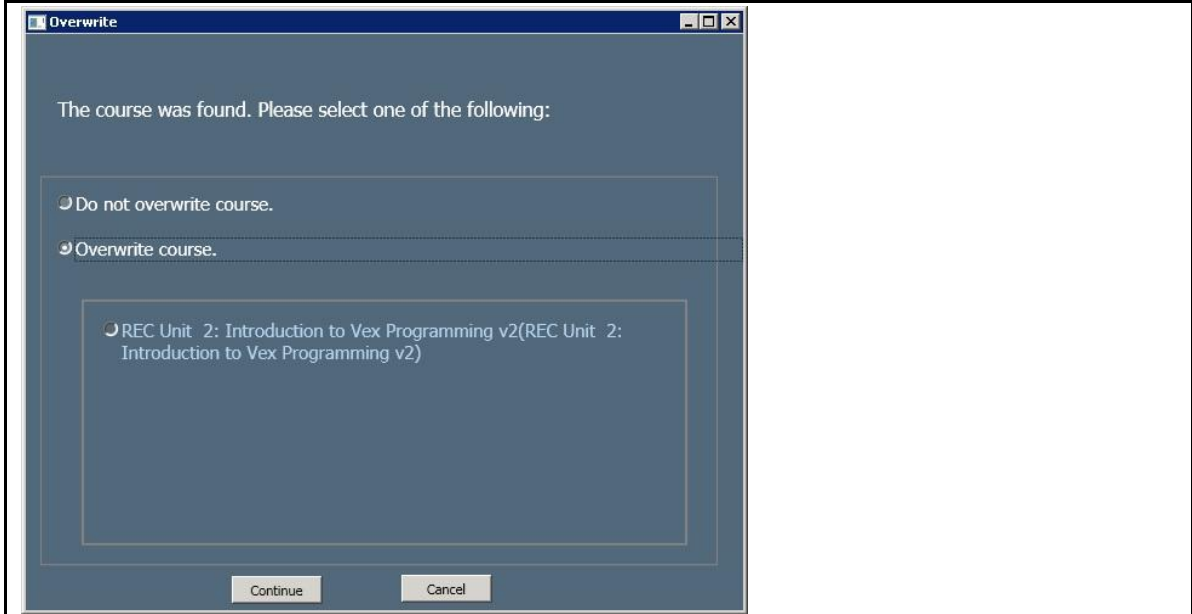
If you choose not to overwrite the existing course, mark the radio button next to *Do not overwrite course*.

11. Click **Continue**.

A course with the same name of the existing course with _1 is installed onto your server.

If you choose to overwrite the existing course, mark the radio button next to *Overwrite course*.

The **Overwrite** window now displays the course or courses that exist with the same name. Mark the radio button next to the course you wish to overwrite.



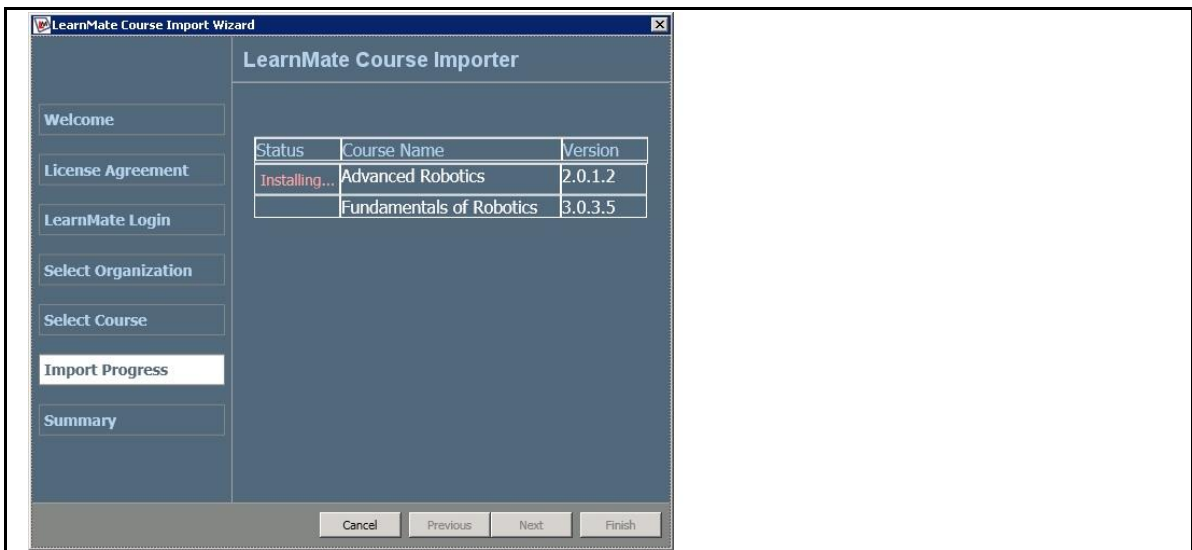
12. Click **Continue**.

The new course is installed and will overwrite the course you selected.

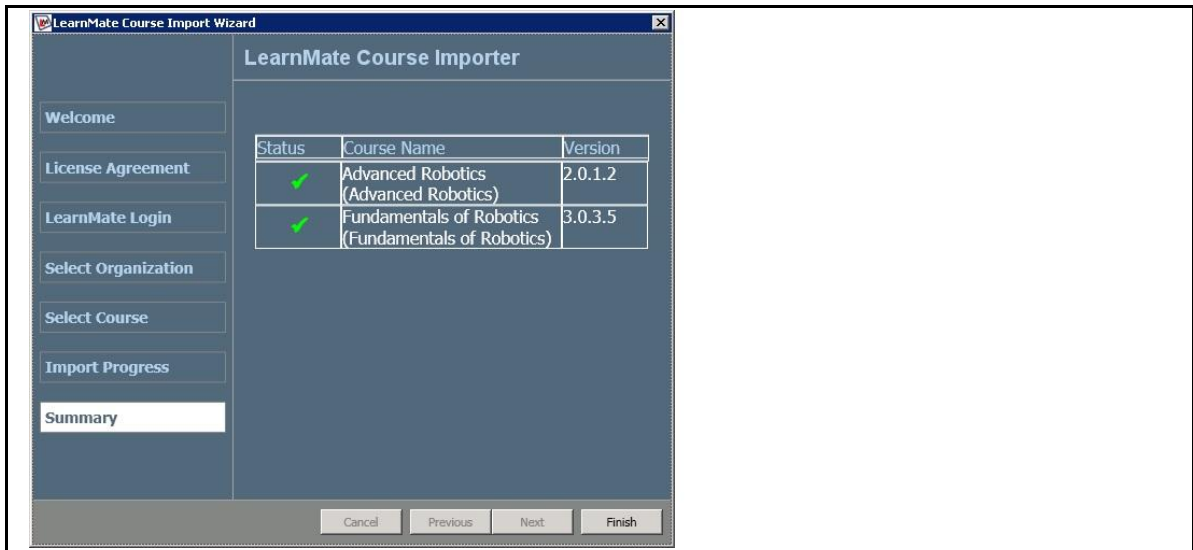
13. Click **Next**.

The **Import Progress** page is displayed. The **Import Progress** page shows the status of each course as the importer is working. It also shows the version of the course being installed.

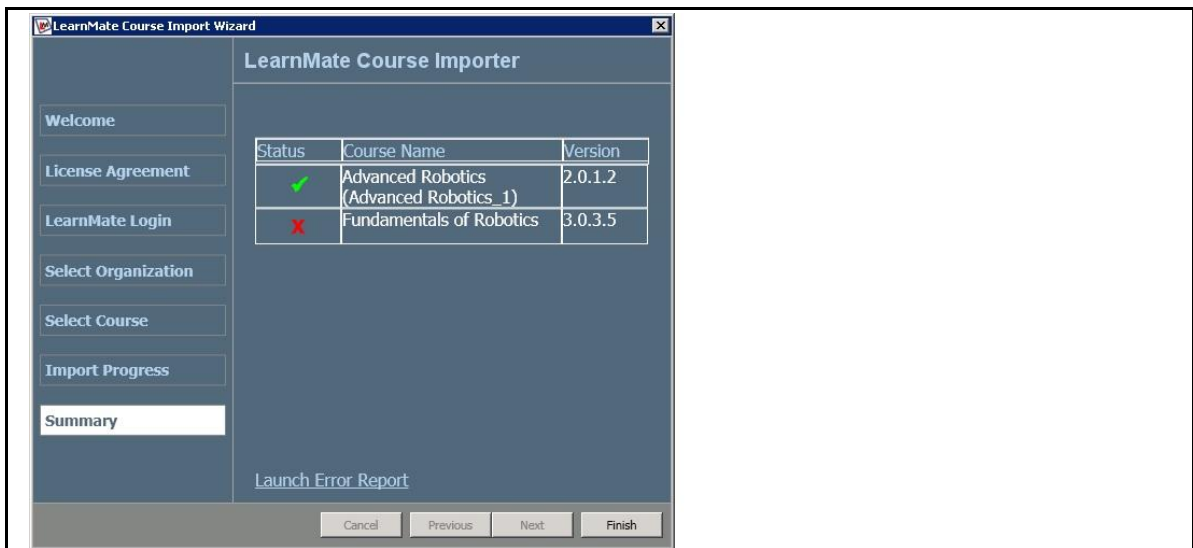
❖ **Note:** If the import is cancelled during the installation of a course, it completes the installation of the course it is on, but will not continue to the following course in the Course Name list.



Once the installation of all courses in the *Course Name* list completes, the **Summary** page is displayed. The **Summary** page shows which courses were selected for import and whether or not the import was successful.

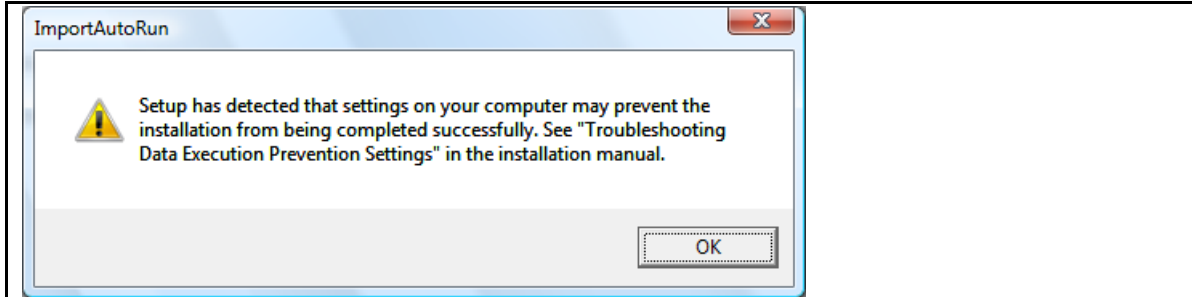


If the import was not successful, a red X appears in the *Status* list. An error report, with a description of what caused the problem, can be accessed from the link [Launch Error Report](#).



1.1 Troubleshooting Data Execution Prevention Settings

The Data Execution Prevention (DEP) setting in your PC is set by default to enable LearnMate 5 server software to be installed onto your computer. If the DEP is set not to enable LearnMate 5 Server software installation, an error message will be displayed during the installation as shown below.



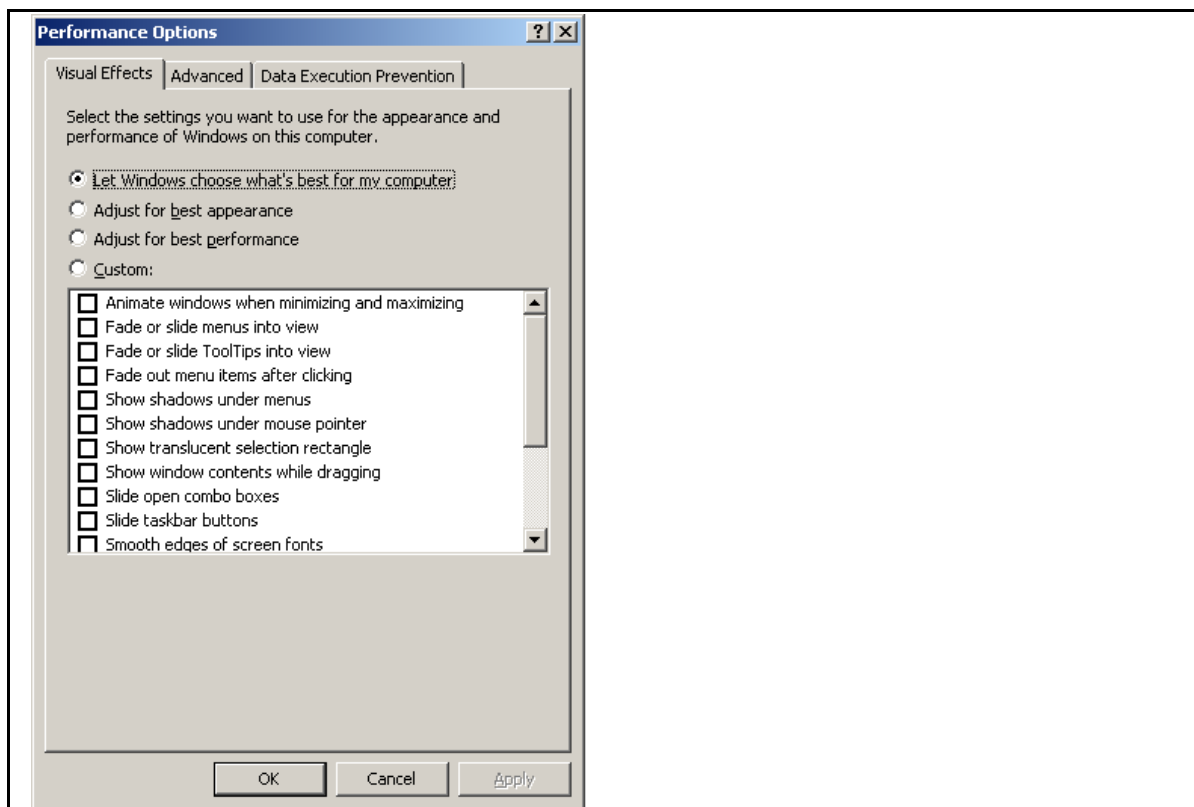
To install the LearnMate 5 Server software, the Data Execution Prevention (DEP) setting on your computer must be changed.

To configure the DEP setting:

1. Open the Windows Desktop.
2. Browse to the **Advanced System Properties**.
 - A. In Windows Server 2003 and Windows XP:
 - a) Click **Control Panel** | **System** | **Advanced Tab**
 - B. In Windows Server 2008 and Windows Vista:
 - a) Click **Control Panel** | **System and Maintenance** | **System**
 - b) Click **Advanced System Settings** in the *Tasks* area on the left of the *System* window.
 - C. In Windows Server 2008 R2 and Windows 7:
 - a) Click **Control Panel** | **System and Security** | **System**
 - b) Click **Advanced System Settings** in the *Tasks* area on the left of the *System* window.

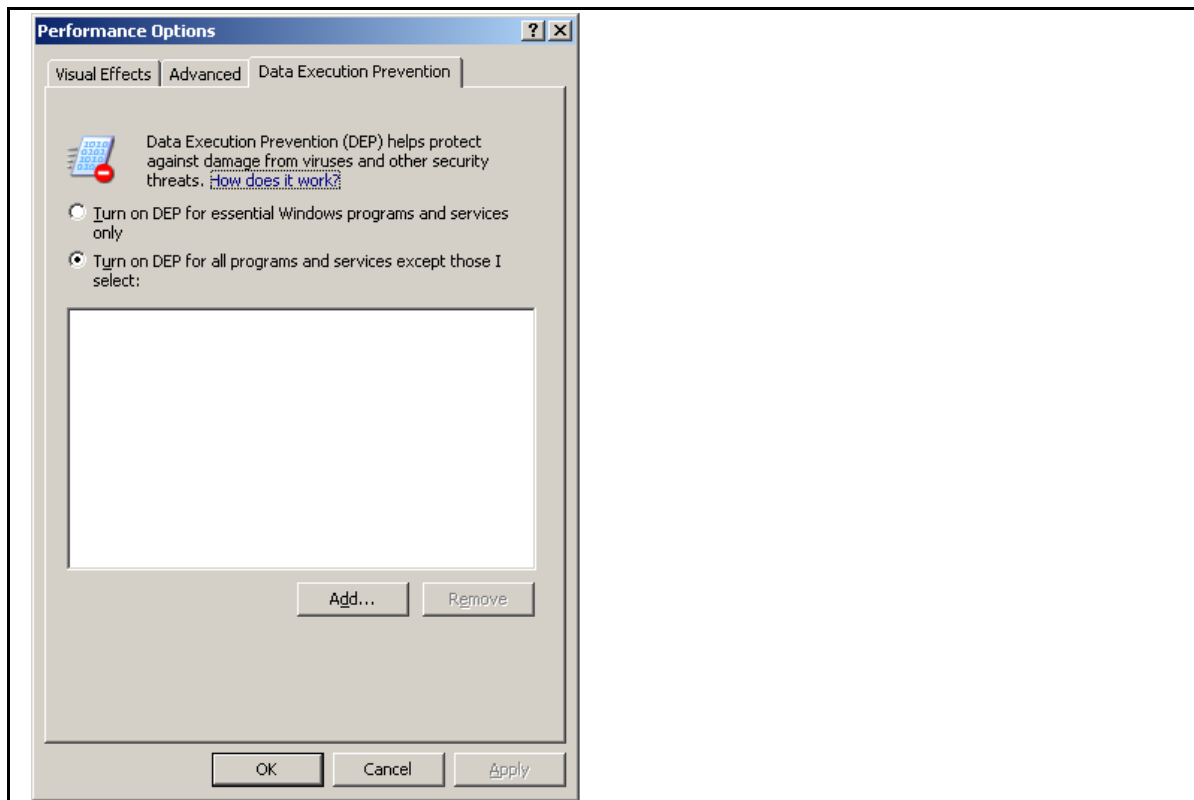
3. Click **Settings**.

The **Performance Options** window is displayed.



4. Click the **Data Execution Prevention** tab.

5. Select the radio button next to *Turn on DEP for essential Windows programs and services only*.



6. Click **Apply**.

You will be prompted to restart your computer. Restart your computer and then restart the LearnMate Course Importer.

- ❖ **Note:** *Your prior DEP setting may be restored after installing the LearnMate 5 software by following steps 1 to 4 above, and selecting the radio button next to Turn on DEP for all programs and services except those I select.*