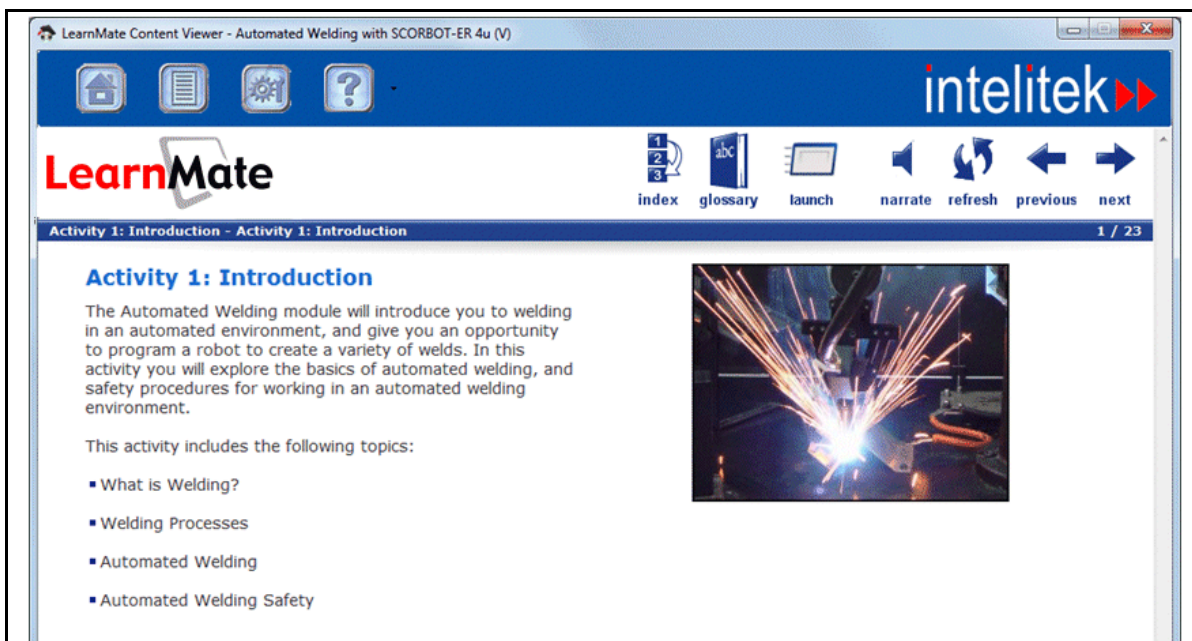


LearnMate Course Installation Guide



Catalog # 200059

May 2013

Copyright © 2013 Intelitek Inc.

LearnMate Course Installation Guide

Catalog No.: 200059

Version: A

May 2013

Every effort has been made to make this guide complete and as accurate as possible. However, no warranty of suitability, purpose or fitness is made or implied. Intelitek Inc. is not liable or responsible to any person or entity for loss or damage in connection with or stemming from the use of the software, equipment and/or the information contained in this publication.

Intelitek Inc. bears no responsibility for errors which may appear in this publication and retains the right to make changes to the software, equipment and manual without prior notice.

Intelitek Inc.

444 East Industrial Park Drive

Manchester, NH 03109-5317

USA

Tel: (603) 625-8600

Fax: (603) 625-2137

website: <http://www.intelitek.com>

email: info@intelitek.com

1. Installing Course Content

This guide provides instructions for installing LearnMate courses for use with the LearnMate Content Viewer. LearnMate courses can be installed only once the Content Viewer is installed.

For more information on LearnMate Content Viewer installation, see the setup guide provided on the installation CD.

1.1 Check Your Administration Privileges

Administrator privileges are required to install course content.

Follow the steps below to check whether you have administrator privileges on a computer:

1. If you are using:
 - Windows 7, click the Windows **Start** button, then right-click the **All Programs** button.
 - An earlier version of Windows, right-click on the Windows **Start** button.
2. If you:
 - See an *Open All Users* option at the bottom of the menu, you have administrator rights on that PC.



- Do not see an *Open All Users* option at the bottom of the menu, contact your IT Administrator either to assign you administrator rights or to perform the installation for you.

1.2 Installation Procedure

The installation procedure is outlined in the sections below. Before starting, note the following:

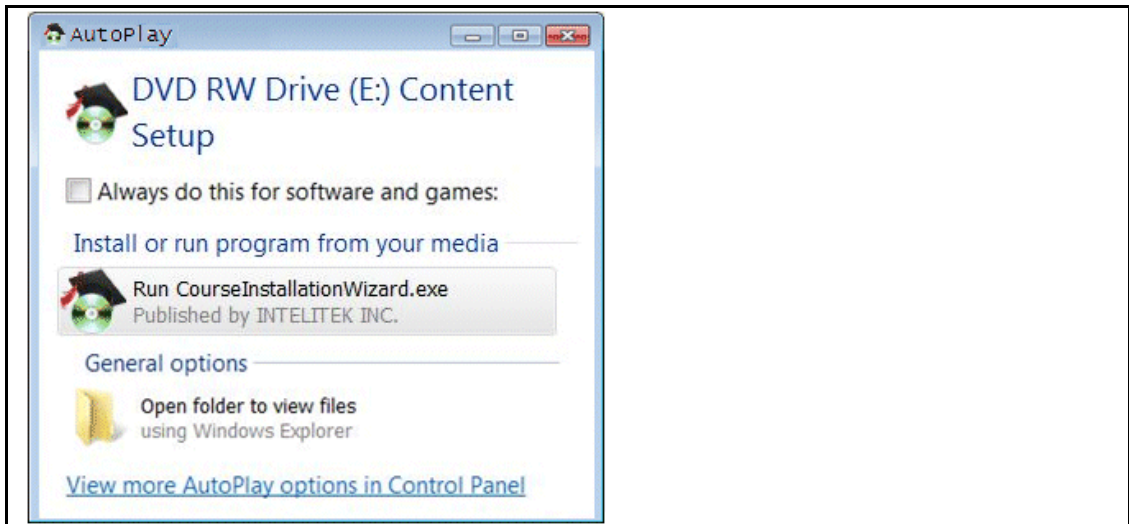
- ❖ **Note:** *Courses are not installed simultaneously. If two or more courses are selected to be installed, the Course Installation Wizard guides you through the installation of the first course. When that course is installed, the wizard then guides you through the installation of the next course.*
- ❖ **Note:** *At any point in the installation process, click **Back** to review or change any of your installation settings.*
- ❖ **Note:** *You may be asked to restart your computer after the installation of a course. **Do not** restart your computer until all desired courses are installed.*
- ❖ **Note:** *If a course is supplied with a software application, you will be asked to install it. See section 1.3 Installing Applications, below.*

1.2.1 Automatic Installation

Course content can be installed automatically or manually.

To install course content automatically:

1. Insert the LearnMate Course Content DVD into the DVD drive. The AutoPlay window is displayed.



2. Click **Run CourseInstallationWizard.exe**. The installation process begins. Proceed to step 3 below.

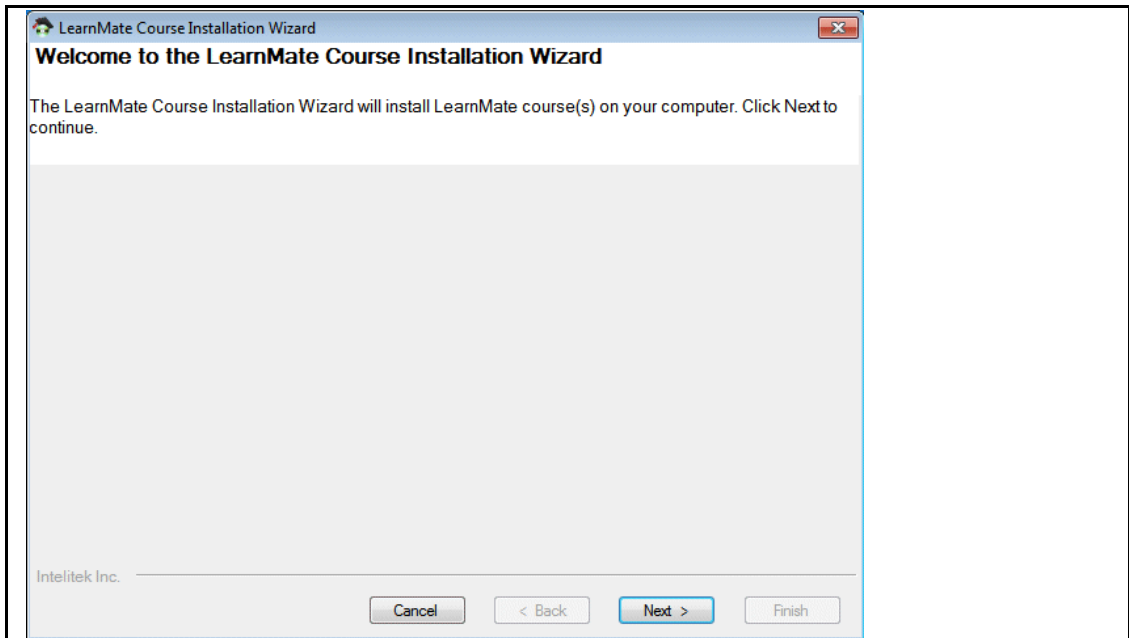
To install course content manually:

1. In the disk folder, double-click the **Install** folder. The contents of the folder are displayed.
2. Double-click CourseInstallationWizard.exe.



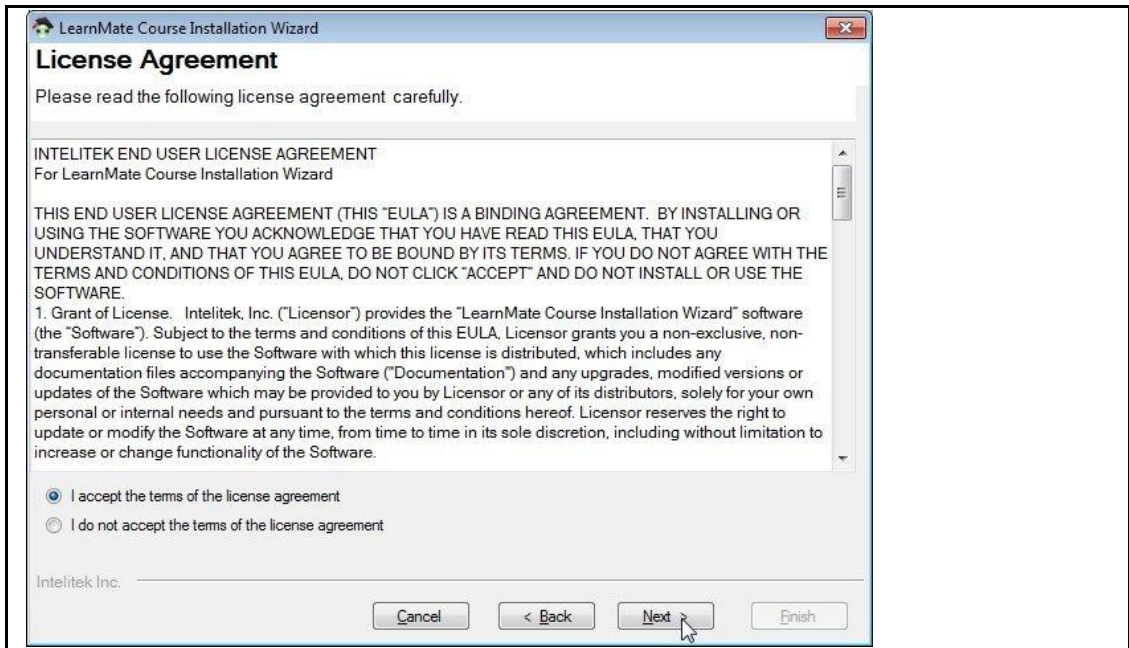
The installation process begins.

3. The LearnMate Course Installation Wizard opens.

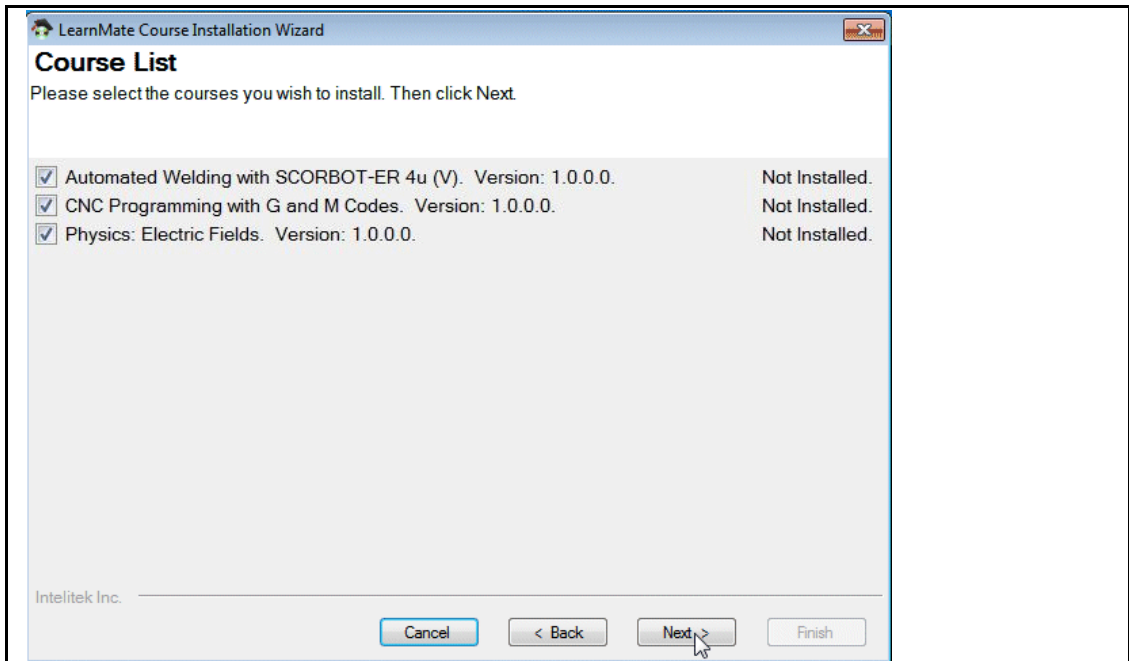


Click **Next**. The License Agreement Page is displayed.

4. Read the terms of the License agreement. Accept the terms by selecting **I accept the terms of the license agreement**, and then click **Next**.

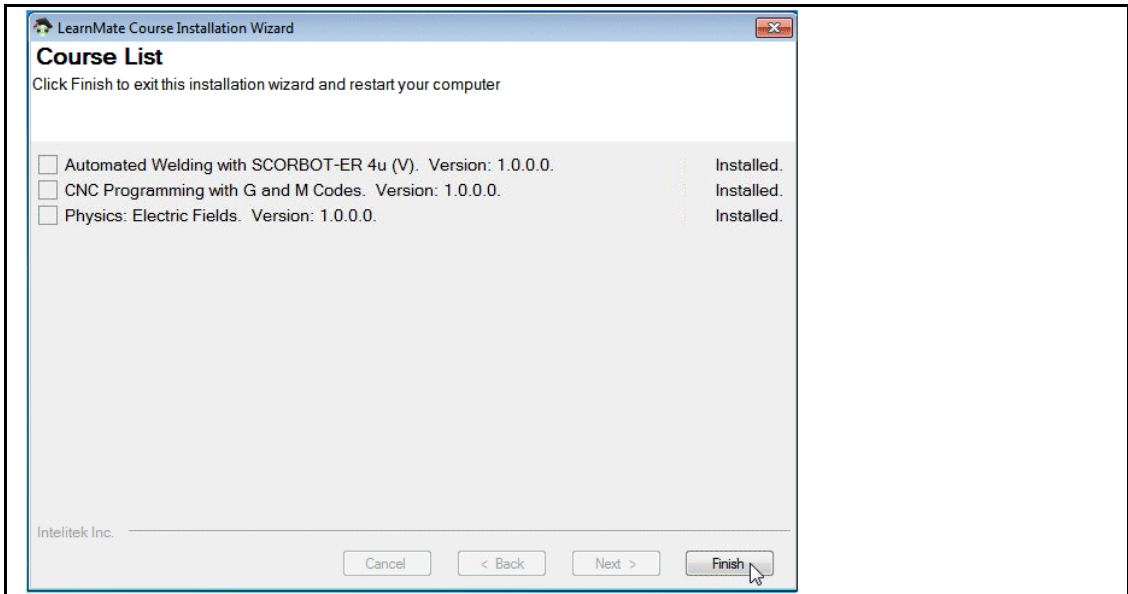


5. Select the course or courses that you want to install. Then click **Next**.



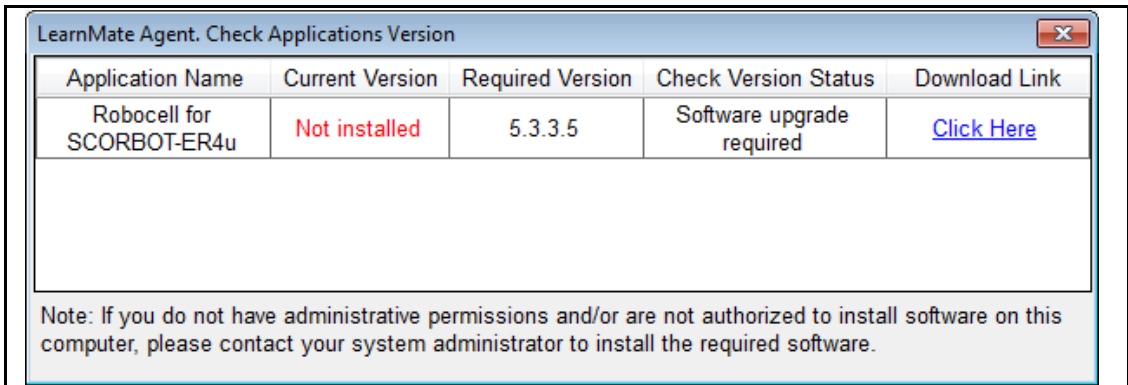
The course or courses are installed one-by-one.

- Click **Finish** to exit the wizard.



1.3 Installing Applications

Some courses are supplied with one or more software applications for learning purposes. If a course includes such an application, the LearnMate Agent window is displayed during the installation of that course.



- ❖ **Note:** The LearnMate Agent window will be displayed even if the required software is already installed on the computer. In such cases, the Check Version Status column will indicate that no action is required. Close the LearnMate Agent window to continue installation.

To install an application:

- In the LearnMate Agent window, click the download link **Click Here**. The Installshield Wizard for the selected application opens.
- Complete the installation of the software application.
- Click **Finish** after the application is installed.
 - ❖ **Note:** Your computer may have to be restarted before the application can be run. **Do not** restart your computer until the LearnMate Course Installation Wizard has finished installing all selected courses.
- If the LearnMate Agent window lists additional applications to install, install those now.
- Once all of the required applications for the course are installed, close the LearnMate Agent window. The LearnMate Course Installation Wizard will then continue.